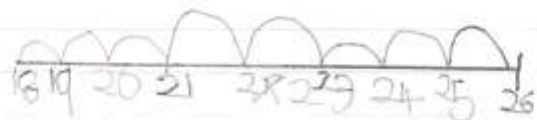


GOOD LEARNERS

Friday 16th June 2017

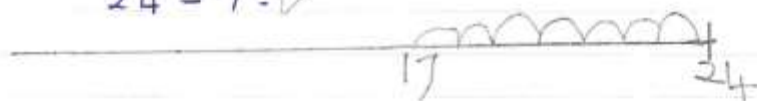
$$26 - 8 = 18$$

Wyatt decided he
wanted a challenge!
He went for drawing
a blank
numberline

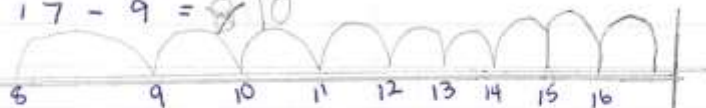


Mrs. Potter says can you do these:

$$24 - 7 = 17$$



$$17 - 9 = 8$$



*
super
tricky

$$23 - 14 = 9$$



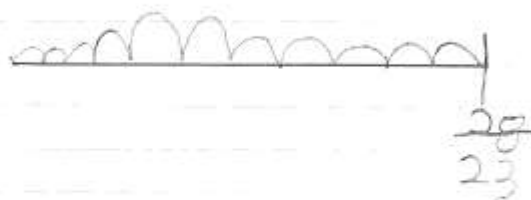
$$15 - 8 = 7$$



$$18 - 12 = 6$$



$$23 - 11 = 12$$



6.6.17

Tuesday

How to Make a Jam Sandwich.

What you will need:

- Jam
- bread (2 slices)
- butter
- knife
- Plate

06.06.17

LI: To write instructions to make a sandwich.

(1)



First, wash your dirty hands thoroughly at the sink with warm water because you don't want dirty hands both together. Next get a fresh plate and some bread that is even, then get the beautiful, pretty golden butter open the lid carefully then the knife and put it in the butter then take it out, and spread it on the bread. Then get the sugar's same jam and get a clean, clean knife and put it in the jam jar and cut the jam in the jar then take it out and spread it on the bread carefully don't get a whole in it then finally, put the bread on top of the other bread then cut it in half equally then the yummy bit eat it.

Great instructions sophia.

Be sure your sentences don't get too long.

L.I. To subtract two 2-digit numbers using blank number line.

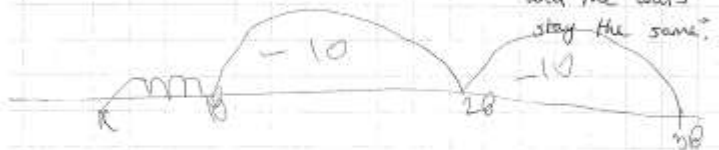


$$28 - 18 = 10$$

Riley can mentally take ten from number.



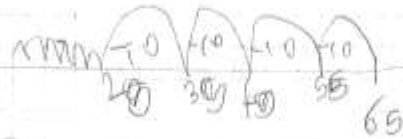
"the tens change and the units stay the same."



$$38 - 15 = 23$$

over 3

"got to jump 2 tens this time."



$$69 - 46 = 23$$

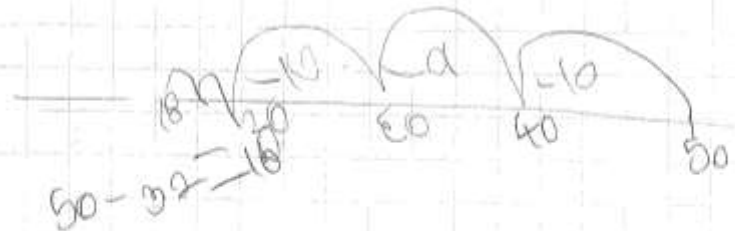
$$70 - 46 = 24$$



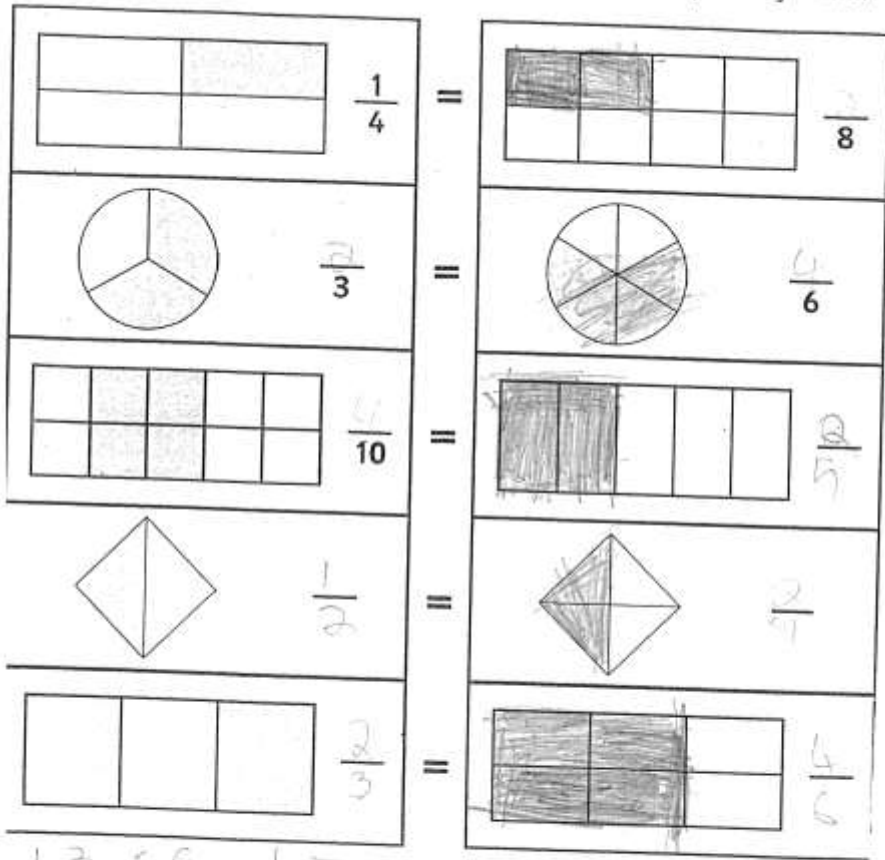
Well done Riley! You can confidently use a blank number line.



"or you could find the difference between 38 and 46."

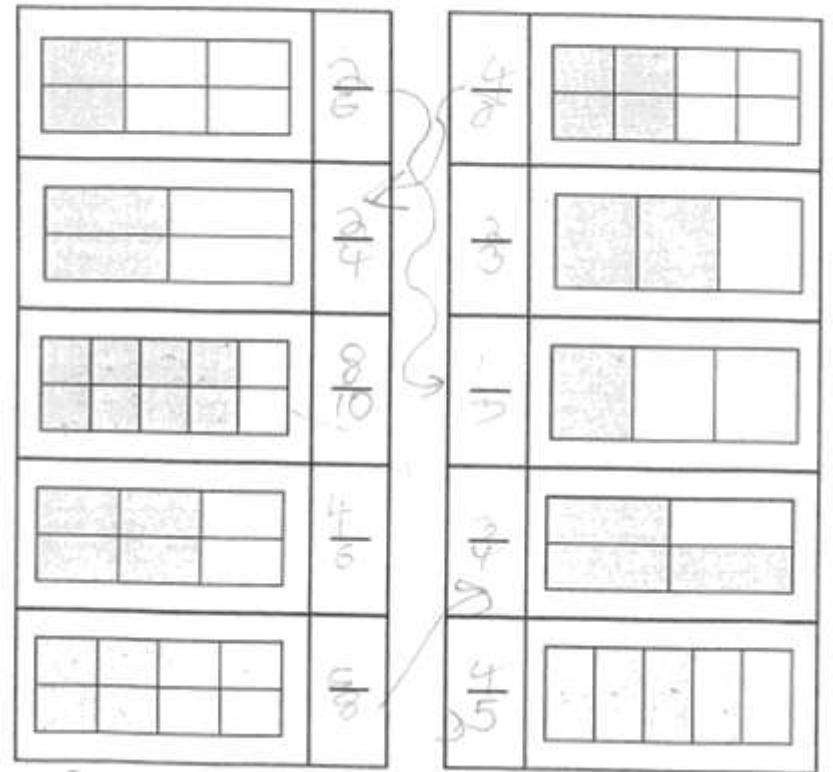


Shade the second shape to be equivalent to the first and write the equivalent fractions.



12 = 6 = 17 4

Write the fraction of each shape that is shaded and draw a line to match each equivalent fraction.





Monday June 12th

2. Mina's character.

She is confident because Mina is talking to Michael and isn't scared to do it. ✓

She is brave because Mina is climbing up a tree quite high trying to see Jaws. ✓

She is inquisitive because she is looking across the fence without being told to. ✓

Mina is talkative because she goes to one point to the other quickly. ✓

Mina is intelligent by knowing what colours birds are plus knows when to stop on a branch to let bird not be scared. ✓

Mina is impatient because she wants an answer straight away. ✓

Good ideas about her character and you have used the text well.

4) 4)

1 3 6 2 0 1 7

1)

$$\frac{2}{9} + \frac{4}{9} = \frac{6}{9}$$

Excellent, you can + and - fractions.

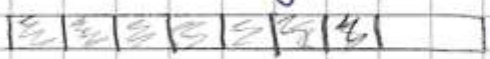
2)

$$\frac{5}{8} - \frac{2}{8} = \frac{3}{8}$$

3)

$$\frac{4}{9} + \frac{3}{9} = \frac{7}{9}$$

Investigate improper fractions.



4)

$$\frac{5}{7} + \frac{1}{7} = \frac{6}{7}$$

5)

$$\frac{9}{12} - \frac{4}{12} = \frac{5}{12}$$

6)

$$\frac{6}{10} + \frac{2}{10} = \frac{8}{10}$$

7)

$$\frac{13}{20} - \frac{7}{20} = \frac{6}{20}$$

I just added the numerator and I took away the denominator. Challenge.

1)

$$\frac{9}{10} + \frac{1}{10} = \frac{10}{10}$$

$$5) \frac{5}{20} + \frac{9}{10} = \frac{11}{10}$$

2)

$$\frac{6}{9} + \frac{7}{9} = \frac{13}{9}$$

$$6) \frac{6}{9} + \frac{4}{9}$$

3)

$$\frac{22}{24} + \frac{13}{24} = \frac{35}{24}$$

$$6) \frac{6}{9} + \frac{4}{9} = \frac{10}{9}$$

4)

$$\frac{5}{8} + \frac{3}{8} = \frac{8}{8}$$

5)

$$\frac{8}{8}$$

Sing amica
o o a u
o o u o p s h
h + o r o o



1st attempt



pwt. characters not ne bibo



Isabella

(2nd attempt)

Tuesday 6th June 2017

Big White - ~~██████████~~

First I was just eating my toast, with jam, when the emergency alarm ^{went} off. I knew I had to get off. Running as quick as my legs would carry me, I speedily sprinted to my medical dinosaur. He carries plaster, bandages, medicine and a first aid kit. In one minute twenty eight seconds my dinosaur and I were at the scene. A dinosaur (I think a stegosaurus) had been attacked. Not long after I had stitched up the stegosaurus' head, the police arrived, they needed to investigate. Making sure I included every detail, I told the police

what I saw.

Once all my work was done and the ambulance had arrived, (in two minutes thirty four seconds ~~one minute six seconds~~ slower than us - YAY!) I decided to take a walk through Sunny Sand Desert. As I was walking, I saw red blobs of stegosaurus blood in the sand, a trail of Agla following it for a while, I started to see some trees. Hidden behind them was a cave. I brought it to myself. I might find an injured animal; but when I entered the cave ^{and} I saw a tyrannosaurus. Not any tyrannosaurus - no Rex, a dinosaur who kills ^{other dinosaurs} was there. The blood wasn't his because

it was stegosaurus blood.

And that is all I remember...

- ✓ You're being creative with punctuation ^{is}
- ✓ I really enjoyed reading this piece of writing. ^{is}
- ✓ Ensure you stick to the task and don't let it get too informal ^{is}

Friday 9th June 2017

LI: 4

Success Criteria	S&P Assessment	Teacher Assessment
I can use interesting sentence starters.	⊕	⊕
I can use powerful vocabulary to create atmosphere.	⊕	⊕
I can include the five senses (see, hear, smell, taste, touch).	⊕	⊕
Challenge: I can use a range of sentence types.	⊕	⊕

Peering out ^{of} the open door of the tent,
sp Francis checked if the coast was
clear; ^{she saw nothing} she slipped on her boots. As
sp quiet as a mouse Francis set off, but
little did she know an eldritch
shadow was following her. Under
her feet she felt sticks snapping,
breaking into two. When she walked
sp past the vast pristine lake a
shiver crawled down her spine.
In the distance swift dancing
shadows pranced across the lake

Francis could smell the burning
fire from her campfire that they
had kept burning to keep them warm in
the night. Francis could taste the
wet leaves in her mouth.

An action-packed description! 4.5 pts.

Was Francis eating the leaves? Use a
green pen to improve your final sentence.

Francis could taste ^{the smoke of her} ~~her~~ cigarette ^{pulling}
her lungs. ~~cigarette~~

6/6/17

2

1. 10mm = ? cm
2. 1cm = ? mm
3. 15mm = ? cm
4. 20mm = ? cm
5. 10cm = ? mm
6. 100mm = ? cm
7. 35mm = ? cm
8. 5cm = ? mm
9. 18cm = ? mm
10. 1.6cm = ? mm

11. 100cm = ? m
12. 1m = ? cm
13. 300cm = ? m
14. 700 cm = ? m
15. 450cm = ? m

fantastic kaydon! ü

① $10 \text{ mm} \div 10 = 1 \text{ cm}$

② $1 \text{ cm} \times 10 = 10 \text{ mm}$

③ $15 \text{ mm} \div 10 = 1.5 \text{ cm}$

④ $20 \text{ mm} \div 10 = 2 \text{ cm}$

⑤ $10 \text{ cm} \times 10 = 100 \text{ mm}$

⑥ $100 \text{ mm} \div 10 = 10 \text{ cm}$

⑦ $35 \text{ mm} \div 10 = 3.5 \text{ cm}$

⑧ $5 \text{ cm} \times 10 = 50 \text{ mm}$

⑨ $18 \text{ cm} \times 10 = 180 \text{ mm}$

⑩ $1.6 \text{ cm} \times 10 = 16 \text{ mm}$

⑪ $100 \text{ cm} \times 10 = 1000 \text{ mm}$

⑫ $1 \text{ m} \times 100 = 100 \text{ cm}$

check ⑪. Your answer is in mm, but the question was for m